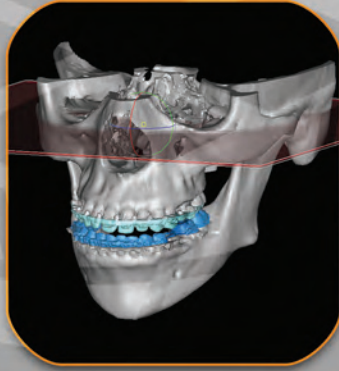


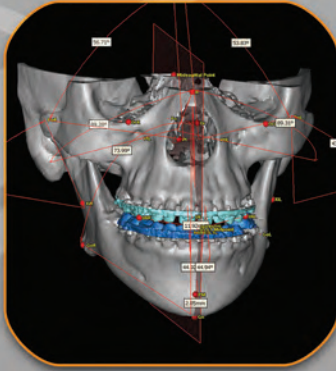


# SimPlant<sup>®</sup> OMS

Digital Orthognathic Planning & CAD/CAM Splints



Unique technology for integration of detailed occlusal anatomy and establishment of NHP



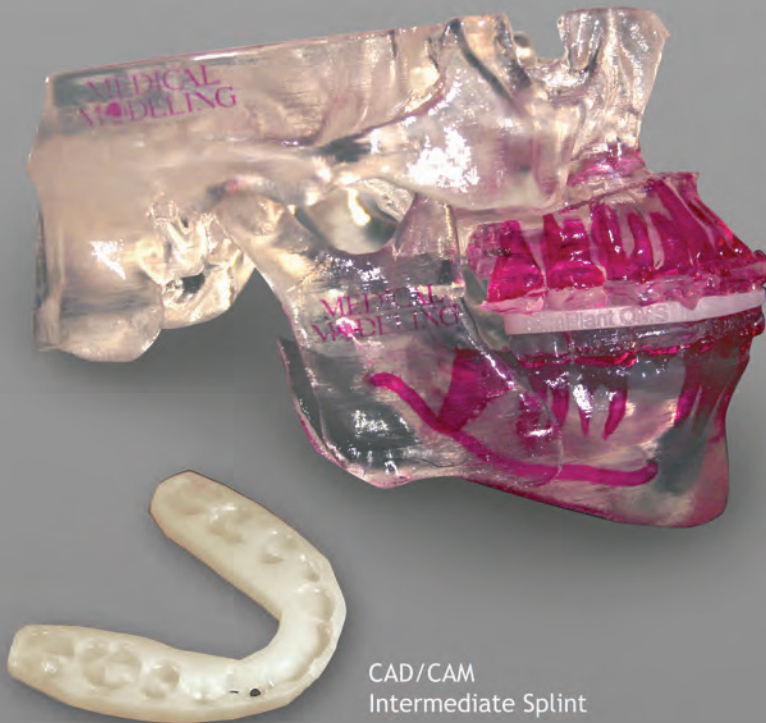
2D and 3D cephalometric analysis



User defined osteotomies and bony movements



Optimization of surgical plan before splint fabrication



CAD/CAM  
Intermediate Splint

**SimPlant OMS** represents a major leap forward in virtual planning of orthognathic surgical procedures. Years of research and patented technology have led to the creation of one software that allows for accurate planning and precise clinical transfer via CAD/CAM splint technology.

- Accurately simulate orthognathic procedures in a virtual environment using CT/CBCT.
- Perform osteotomies and bony movements while analyzing soft tissue predictions.
- Assistance from a team of experts at Medical Modeling.
- Transfer the clinical plan to surgery using custom CAD/CAM splints, guides and models.

Software Developed by  
**Materialise**  
Dental

Software Distributed by  
**MEDICAL<sup>®</sup>**  
**MODELING**